

ABERNANT PRIMARY SCHOOL

A GUIDE TO THE CHANGES IN OUR
SCHOOL AND THE SPECIAL
EDUCATIONAL NEEDS SYSTEM



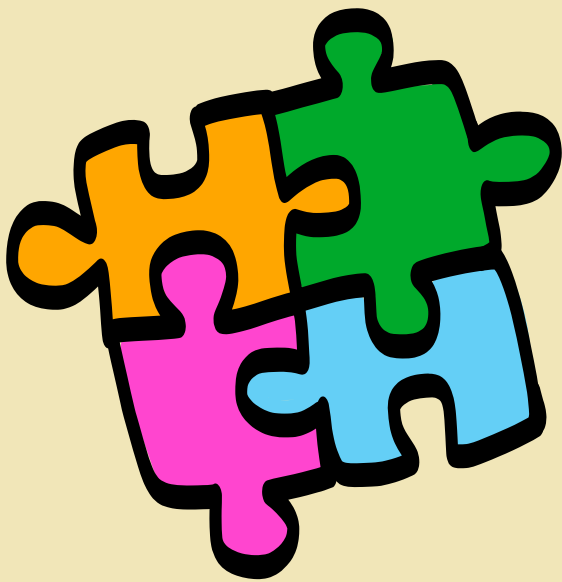
Our School



As a school we are determined to deliver a fully inclusive education system for all our learners. We follow a robust process where needs are identified early and addressed quickly and where all our learners are supported to reach their potential. Our learners are at the centre of everything we do.

Our systems are flexible and responsive, our staff are professional and skilled. We are confident in identifying needs and deploying strategies to help learners overcome their barriers.





Learning and Teaching

“The Abernant Way!”

Our vision for learning and teaching

At Abernant Primary School we believe in the concept of lifelong learning and the idea that both adults and children learn new things every day. We maintain that learning should be a rewarding and enjoyable experience for everyone; it should be fun.

Through our teaching, we equip children with the skills, knowledge and understanding necessary to be able to make informed choices about the important things in their lives. We believe that appropriate teaching and learning experiences help children to lead happy and rewarding lives. We also believe in equality of opportunity to succeed for every child and our learning programmes will enable each learner to reach his / her challenging yet realistic targets.

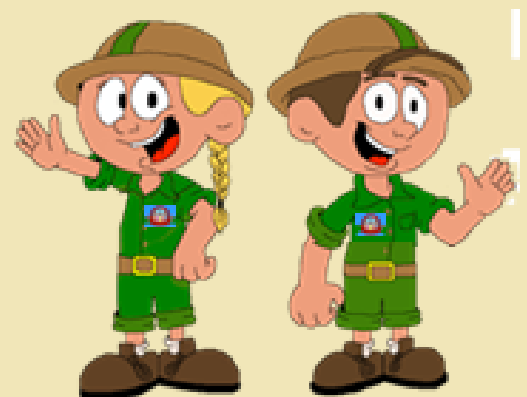
To this end we have adopted a collaborative approach.

"Education by design is a classroom dynamic that guides the thoughtful design of learning experiences for children. Children frequently work collaboratively to achieve desired results – as they develop knowledge and understanding, critical and vital habits of mind." Emotional Behavioural Development is grounded in strong values. It is standards driven. It is built on the development of effective learning communities.

We believe that education must be experiential, must nurture independence and must enable all members of each generation to develop the judgments necessary to take responsibility for: The conduct of their lives, the shaping of their societies and Global citizenship. We believe that judgment is the integration of knowledge, skills and standards of ethical behaviour that guides decisions, commitment, and action.

Throughout this, and every other curriculum-based policy, the right of every child to acquire and apply basic skills is implicit and their entitlement to support in the acquisition of those skills is fundamental.

I can & I will



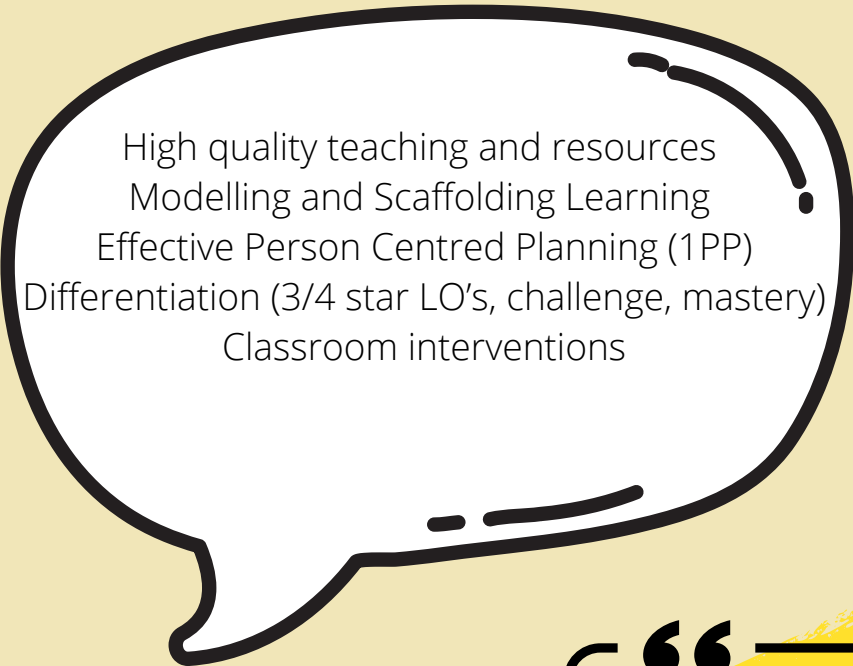


PROVISION

"Childhood is not a race to see how quickly a child can read, write and count. Childhood is a small window of time to learn and develop at the pace which is right for each individual child."

Universal Provision

This is what we as a school offer to all of our children to best support their learning.



- High quality teaching and resources
- Modelling and Scaffolding Learning
- Effective Person Centred Planning (1PP)
- Differentiation (3/4 star LO's, challenge, mastery)
- Classroom interventions



“ ADDITIONAL LEARNING PROVISION ”

Anything additional to or different from what we provide universally will be considered as ALP.



Search.

| The new Special Educational Needs System



The new system defines SEN as Additional Learning Needs (ALN).

ALN Transformation Programme

The new law for supporting children and young people with ALN will bring about several main changes that include:-

- bringing together all current systems into one
- being learner-centered
- providing learners with the same rights and entitlements whatever their age or setting
- improving transition between setting
- being fair and transparent system for all

www.gov.wales/additonal-learning-needs-special-educational-needs



What happens now?

Children and young people with SEN or learning difficulties/disabilities might have:

- an individual education plan (IEP)
- a statement
- a learning and skill plan

What will change?

Many of these children and young people will continue to have their needs met through high quality and routine classroom practice. There are a few children and young people who have a learning difficulty or disability that calls for additional learning provision. This is provision that is different to or different from that is available for others the same age.

These children will need an IDP

This will be a phased approach over 3 years.

What is an IDP?

Individual Development plan

An individual development plan or IDP is created through collaboration with the child parent/carer in partnership with wider agencies that may be involved. It will include what's important to and for them, a description of their learning needs and what will be done so they are properly supported in school and the additional learning provision (ALP) required to meet their additional learning needs.

Over the next three years IDP's will replace all the plans we now have including statements and IEPs.

Our School Process

Our school has a very robust system in place to support all of our learners.

Identifying ALN:-

- Early identification where school is made aware of a child that may have an ALN. Through parental or staff concerns. ALNCo will meet with parents/staff concerned and complete and initial concerns form. This will begin part of our graduated response.
- Staff and ALNCo will monitor concerns very closely and deploy strategies to support the child.
- Referrals to other professional (Educational Psychologist learner support) will be made where appropriate.
- A PCP meeting will then be held to decide whether the child has an ALN.
- From this meeting an IDP will be developed in line with parents, child and other professionals if it is decided the child has an ALN. If it decided they do not have an ALN, school will continue with the current universal provision to best support the child's needs.



If you require any further support or if you have any questions or queries with regards to what you have read please contact:

Miss Yasmin Russell (ALNCo)

YASMIN.RUSSELL@abernantprimary.rctcbc.cymru

or call 01685 871597

